



Cyber Range Presentation

The course is intended to team willing to learn and practice programming techniques.



3 days duration



DIATEAM certified training

Summary

- Platforms
- Services



Platforms

Platforms

CYBER TRAINING



AWARENESS
THROUGH PRACTICE



OPERATIONAL
TRAINING



IMMERSIVE
EXERCISES



CYBER LABS



TEST & ANALYSIS



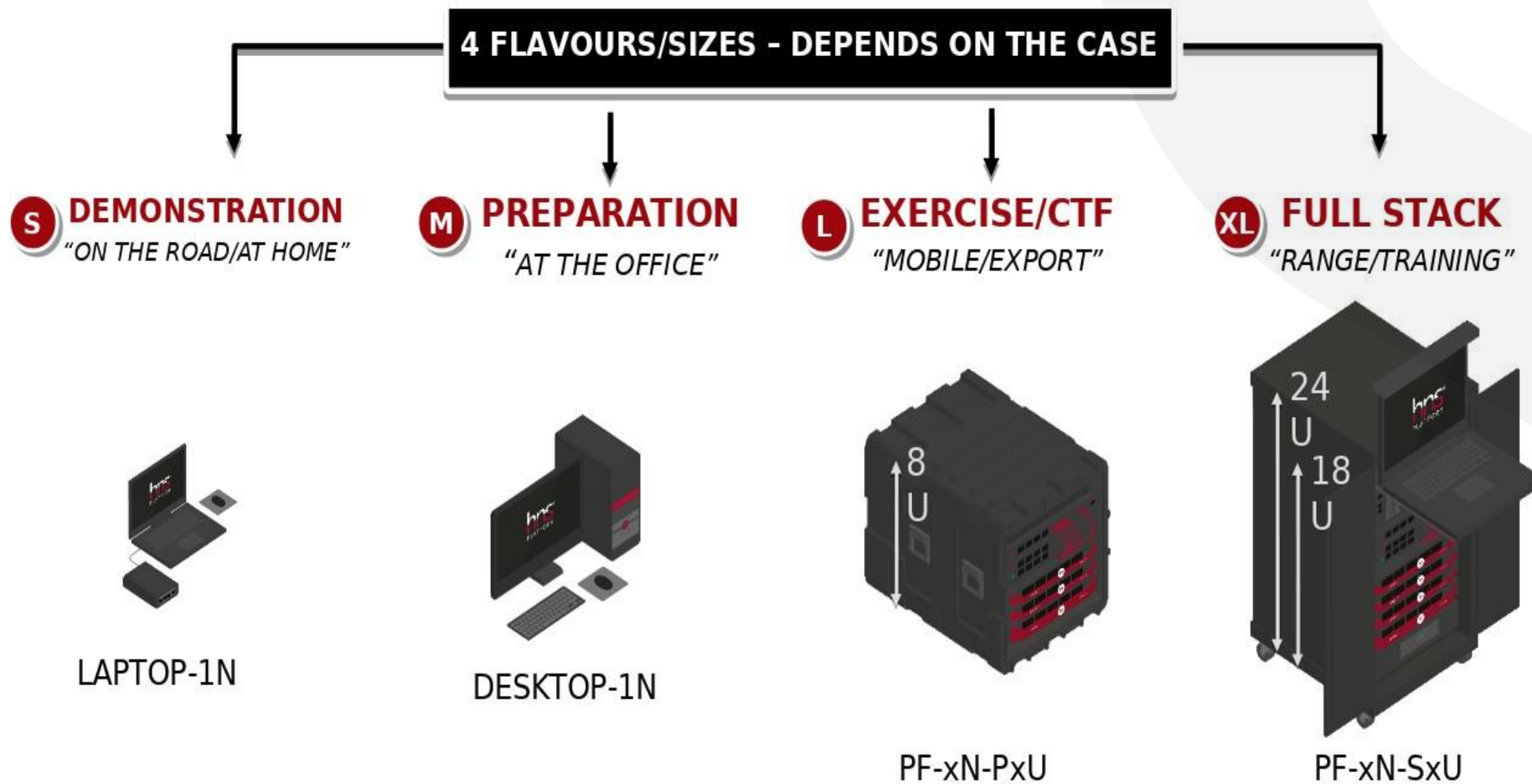
PROTOTYPING
& EVALUATION



MAINTAIN
IN SAFE CONDITIONS

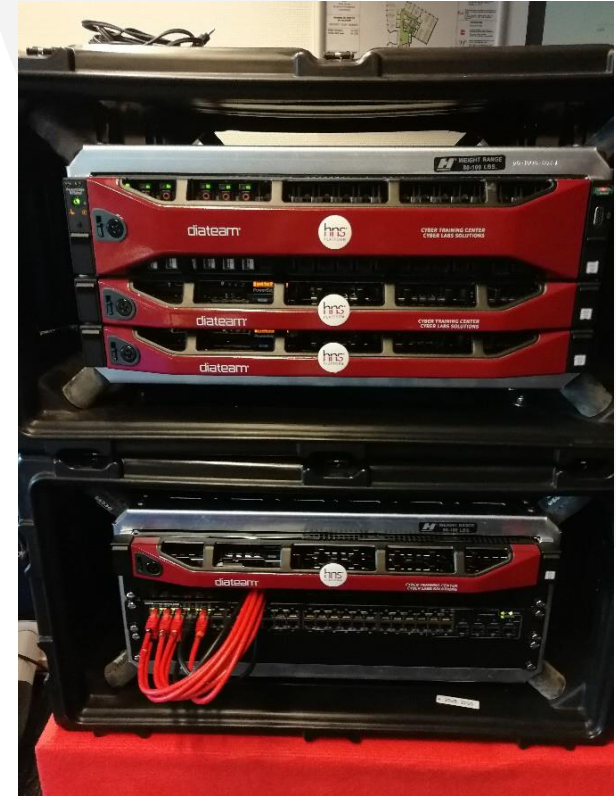
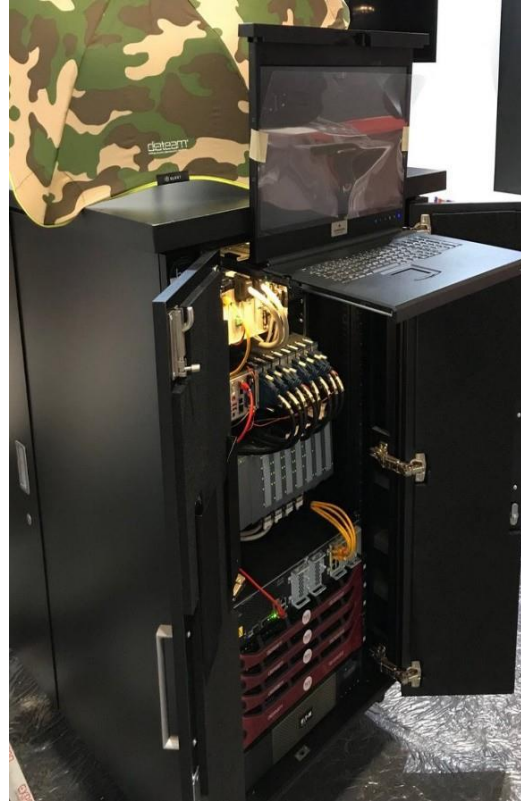
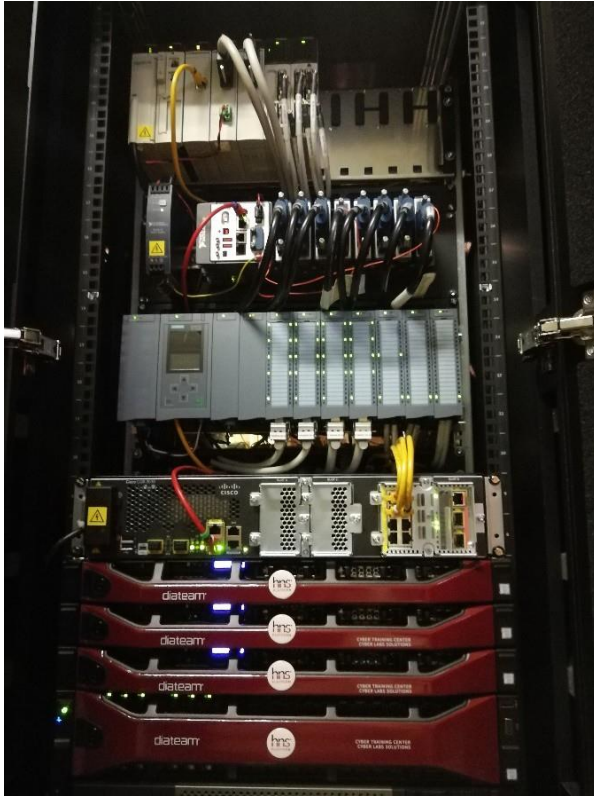
Platforms

- Multiple sizes



Platforms

- Examples





DIATEAM

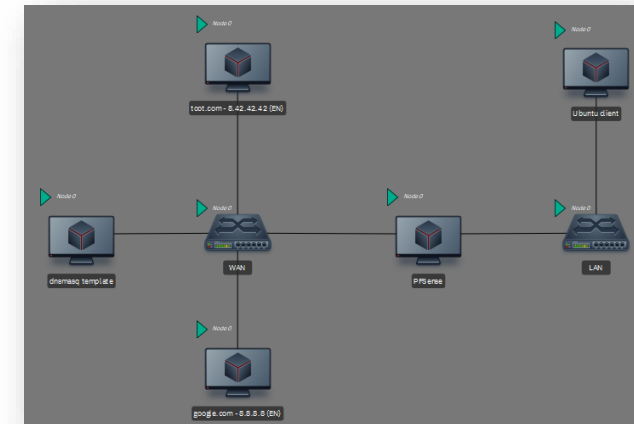
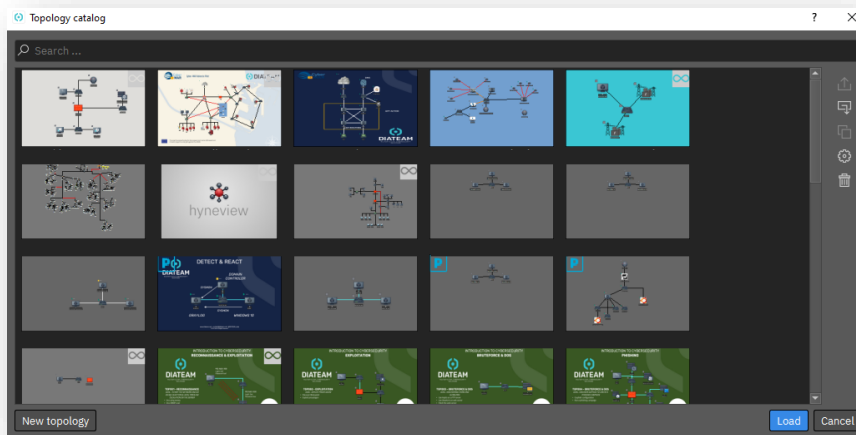
a Cy4gate company

Services

Services

- Hynesim services
 - hapi
 - ActionManager
 - hcli

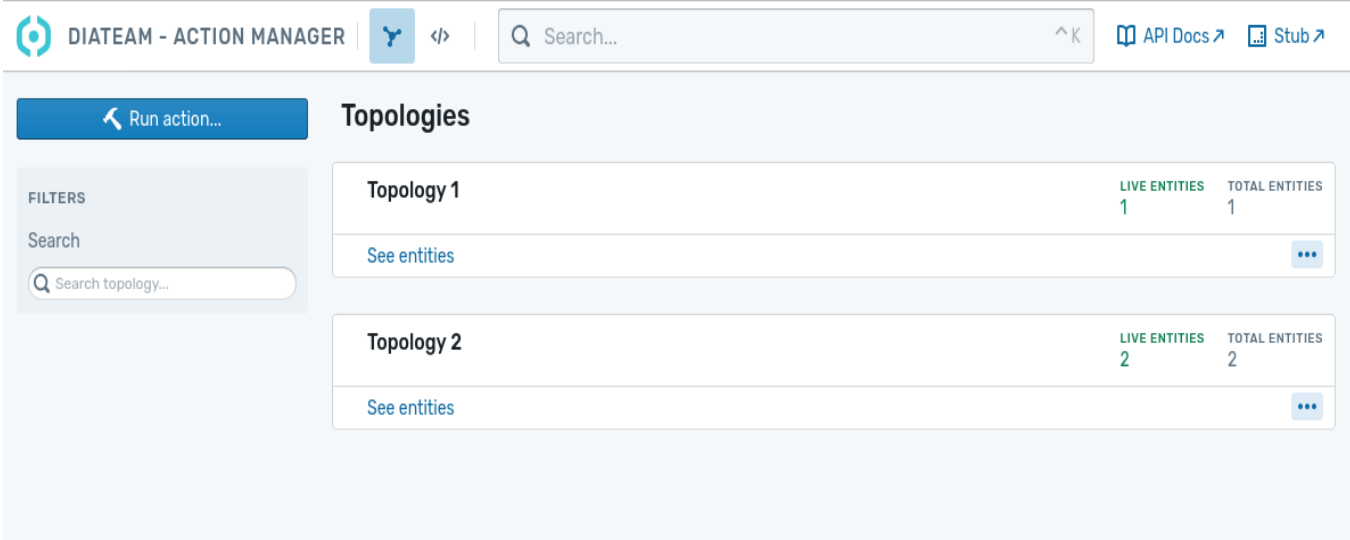
- Hynesim presentation
 - Virtual equipment orchestration (machines, switches, ...).
 - Easy creation of network between machines.
 - Hybrid capabilities, connection to real equipment.
 - Distributed architecture allowing for load balancing.
 - Multi users.
 - Easy to share entities and topologies via the import/export capabilities.



- Hynesim vocabulary
 - Master: the service, that oversees nodes.
 - Node: the service, that oversees virtual machines.
 - Hyneview: graphical client, used to give orders to the master.
- Topology: a representation of a network architecture.
- Domain: a virtual machine. This name is borrowed from libvirt.
- Hybrid netcard: a virtual equipment used to connect a simulated network with a real network
- Topology gate: a virtual equipment allowing the connection of multiple virtual topologies.

- hapi presentation
 - REST API to interact with hynesim.
 - Allows automating actions that could be done manually via hyneview. (topology building, starting entities, clones...).
 - Authenticated the same way hynesim is (separated users).

- ActionManager presentation
 - Agent allowing the control of a virtual machine from the inside
 - Serial port in the virtual machine
 - REST API to automate action launching
 - Web application



The screenshot displays the DIATEAM - ACTION MANAGER web application interface. The header includes the application name, a search bar, and navigation links for API Docs and Stub. The main content area is titled 'Topologies' and features a table with two entries. Each entry shows the topology name, the number of live entities, and the total number of entities. A 'Run action...' button is visible on the left, and a 'FILTERS' section with a search input is also present.

Topology	LIVE ENTITIES	TOTAL ENTITIES
Topology 1	1	1
Topology 2	2	2

- hcli presentation
 - Commande line interface
 - Created to interact with hynesim
 - Allow to perform actions on topologies, entities, users...

```
~  
➔ hcli topologies af9b6ca0-66ca-4364-bc66-0e420693f8b6  
General information  
ShortName      Moodle-LMS  
UUID           af9b6ca0-66ca-4364-bc66-0e420693f8b6  
Description  
Status         ● unloaded  
  
List of entity entries  
ShortName      UUID                               Type           Status  
Moodle ubuntu  4794e06e-7d1e-45a0-8309-6d189a541a69 domain.kvm     ● not loaded  
Topology gate - internet-hub  7c93bfc9-f055-487a-a871-dadaf799c9d7 topologyGate  ● not loaded
```



HNS Presentation

**MANY THANKS !
QUESTIONS ?**



3 days duration



DIATEAM certified training